

INTERIOR DESIGN

PORTFOLIO



our Vision

creating a space that adds tangible value to your life and your investment. we create a unique style that suits your vision.

our Mission

is to create a space of beauty, functionality, and comfort that perfectly matches your personality and your business or family's needs.

We achieve this by considering every facet of your life – including your daily rituals, profession, hobbies and of course design tastes.

Bohemian style



Eclectic style



Eclectic style is all about harmony and the coming together of disparate styles, juxtaposing textures, and contrasting colors to create a cohesive, beautifully realized room that wouldn't be out of place in a home décor magazine as this is one design style that takes verve and a great eye.

Unlike some styles, eclectic design is characterized by variety and unpredictability. The eclectic style involves incorporating pieces from different periods and styles.

Traditional style



Traditional style often includes silk, linen and velvet upholstery and window coverings in damask, florals, stripes and plaids with ornately detailed dark wood.



Traditional interior design is a style of decor based on the aesthetics of 18th and 19th century European homes.

It takes inspiration from neoclassical, Georgian and Victorian design to create elegant yet comfortingly familiar interiors that are ageless and sophisticated.



Transitional spaces offset the sometimes austere look of classical interiors by bringing in vivid pops of colour, on-trend palettes or modern textures to create a gorgeous contrast.

Essentially, it's a style that looks to combine the best of contemporary and vintage design, with the end result being a room that's comforting, chic and chock-full of personality.

Asian style

Japanese Interior Design

Japanese interior design has a significant focus on natural materials, minimal decor, neutral color palettes, and indoor/outdoor connections.

It's often centered around "wabi-sabi," or the belief in understated elegance and the beauty in natural but imperfect objects.



Chinese Interior Design

Chinese interior design dates back centuries with prominent features including screens and furniture with latticework, warm color palettes, pops of red, pieces made of metal, lacquered surfaces, and lanterns.

The key element to Chinese interiors is that spaces reflect a sense of harmony, intricate decoration mixed with a blend of warm colours.



Natural materials such as wood, bamboo, and stone are quintessential to East Asian interior decor.

Furniture, flooring, and decorative elements extensively use these materials, infusing the space with an organic and grounded feel.

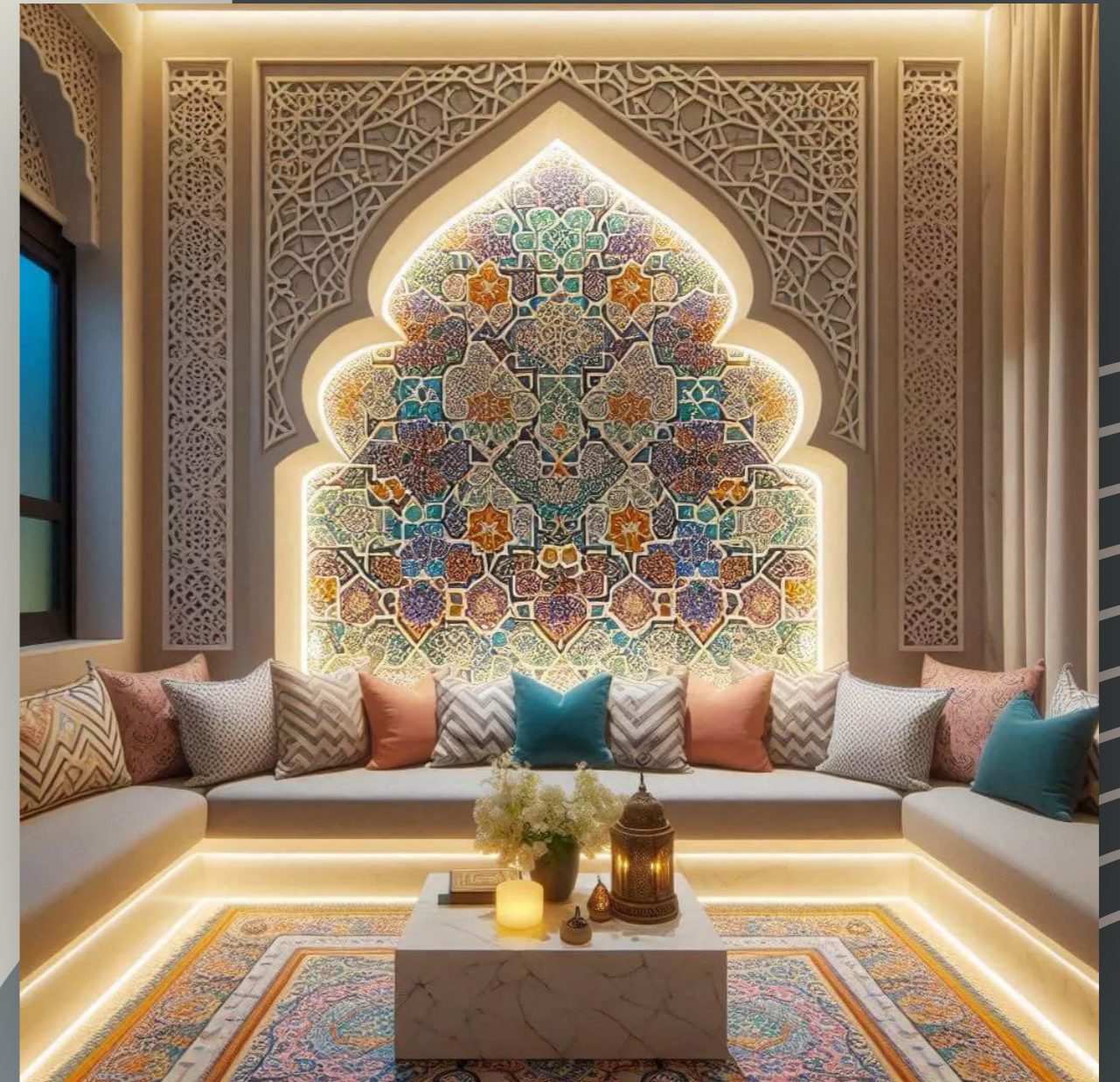
Traditional style



Luxury is a key element of Saudi Arabian interior design. Opulent materials, such as marble, gold, and silk, are used to create spaces that exude elegance and sophistication.

Saudi Interior Design

Saudi interiors frequently have elaborate textiles and patterns that pay homage to the cultural heritage of the area. Wall coverings, furniture, and ornamental accents frequently feature calligraphy, arabesques, and geometric patterns.



Natural materials

Use wood, stone, and linen for an authentic feel. Indoor-outdoor connection: Large windows and natural light enhance the style's breezy, open feel.



Mediterranean interior design features warm, earthy tones like terracotta, light greys, and off-whites, complemented by sea-inspired blues and brighter whites for a Greek island aesthetic.

Graffiti style

Identity style

Creativity and Expression: Graffiti is often a means for artists to express their thoughts, feelings, and identities. Like traditional art forms, it can convey powerful messages and emotions, reflecting the artist's perspective and the community's context.



Commercial style

Commercial interior design focuses on creating well-designed, functional, and visually appealing spaces that support the goals of the business or brand, and create a positive experience for customers, visitors, patients, clients, and their employees.

Commercial interior designers plan public spaces—government buildings, private businesses, or other corporate entities.

Offices are a common focus of these professionals, but they may also work with schools, banks, retail establishments, and other public spaces.



Industrial style

It's a style inspired by the noble look of warehouses, factories and industrial spaces.

Materials and textures

The industrial style is a versatile and neutral style that stands out for the combination of different materials such as wood, metal, concrete, leather and iron, but also for the brick walls, the stripped floors, the visible beams and the concrete floors.

The decor includes stripped-down architectural details, including the use of bare bricks, metals, and wood, as well as recycled materials. Industrial-style furniture is generally resistant to wear and tear.

make interior spaces functional, safe, and beautiful for almost every type of building. Interior designers make indoor spaces functional, safe, and beautiful by determining space requirements and selecting essential and decorative items, such as colors, lighting, and materials.





OUR

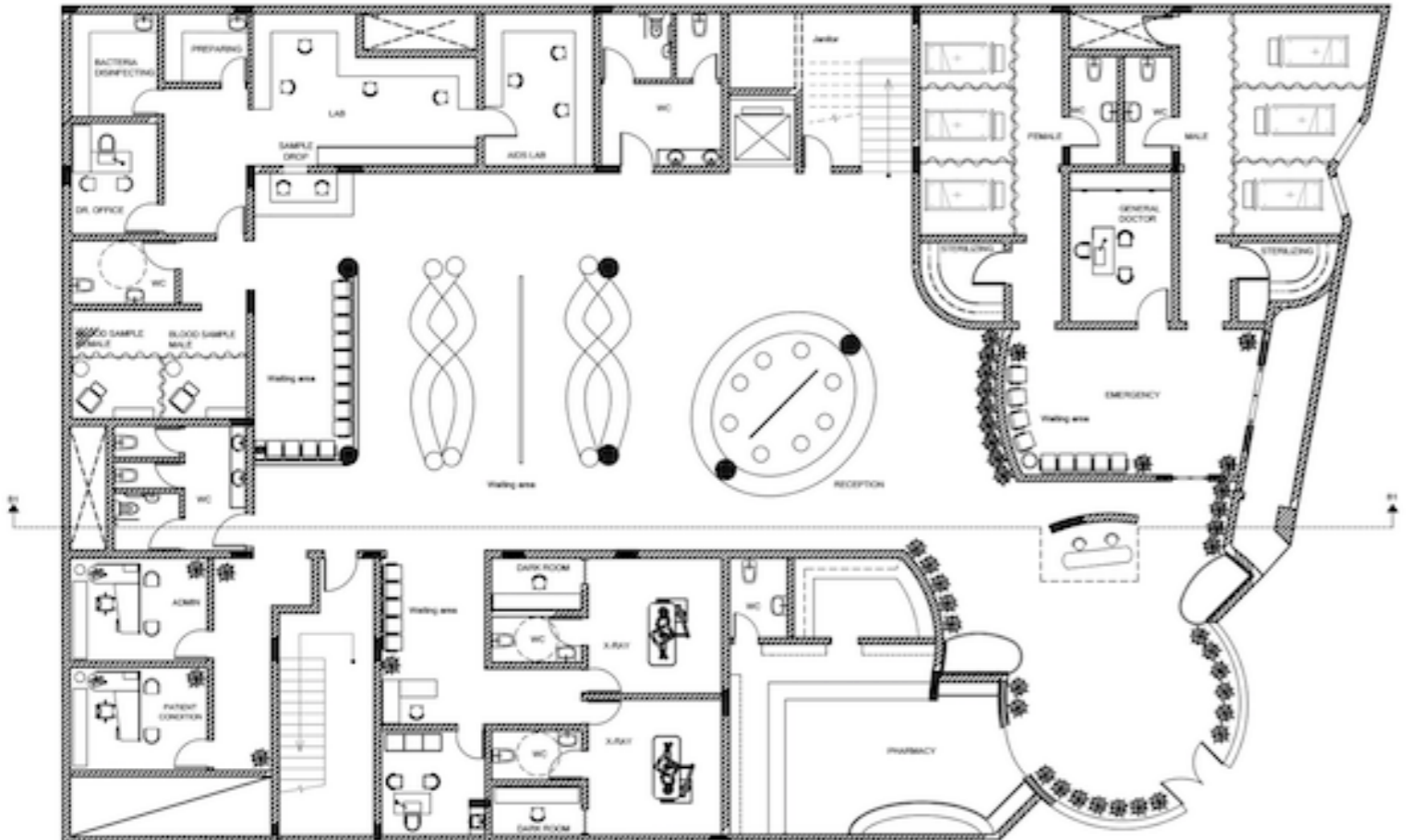
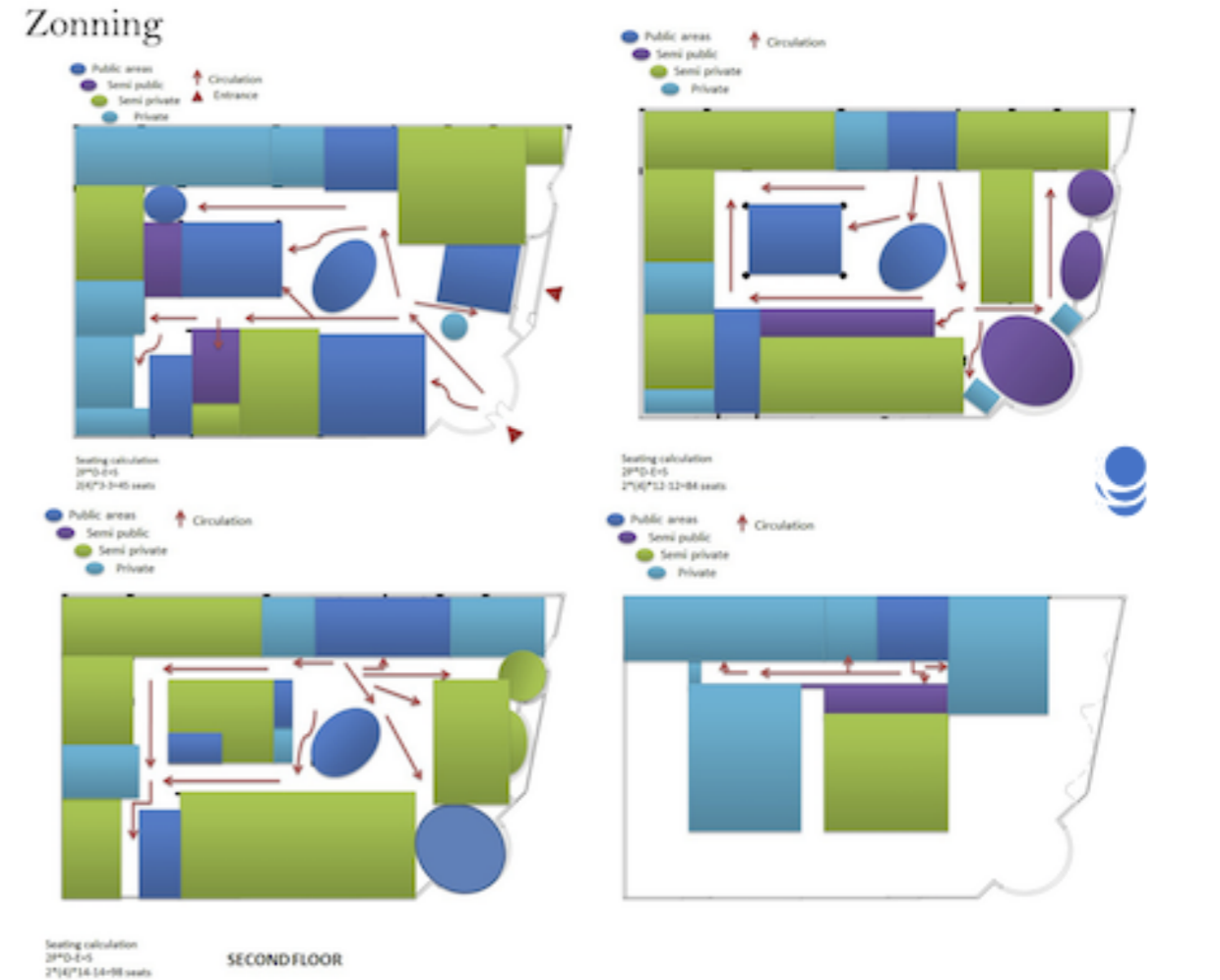
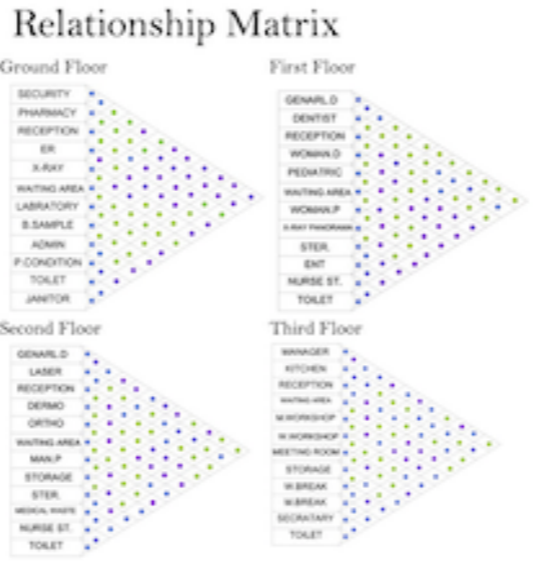
WORK



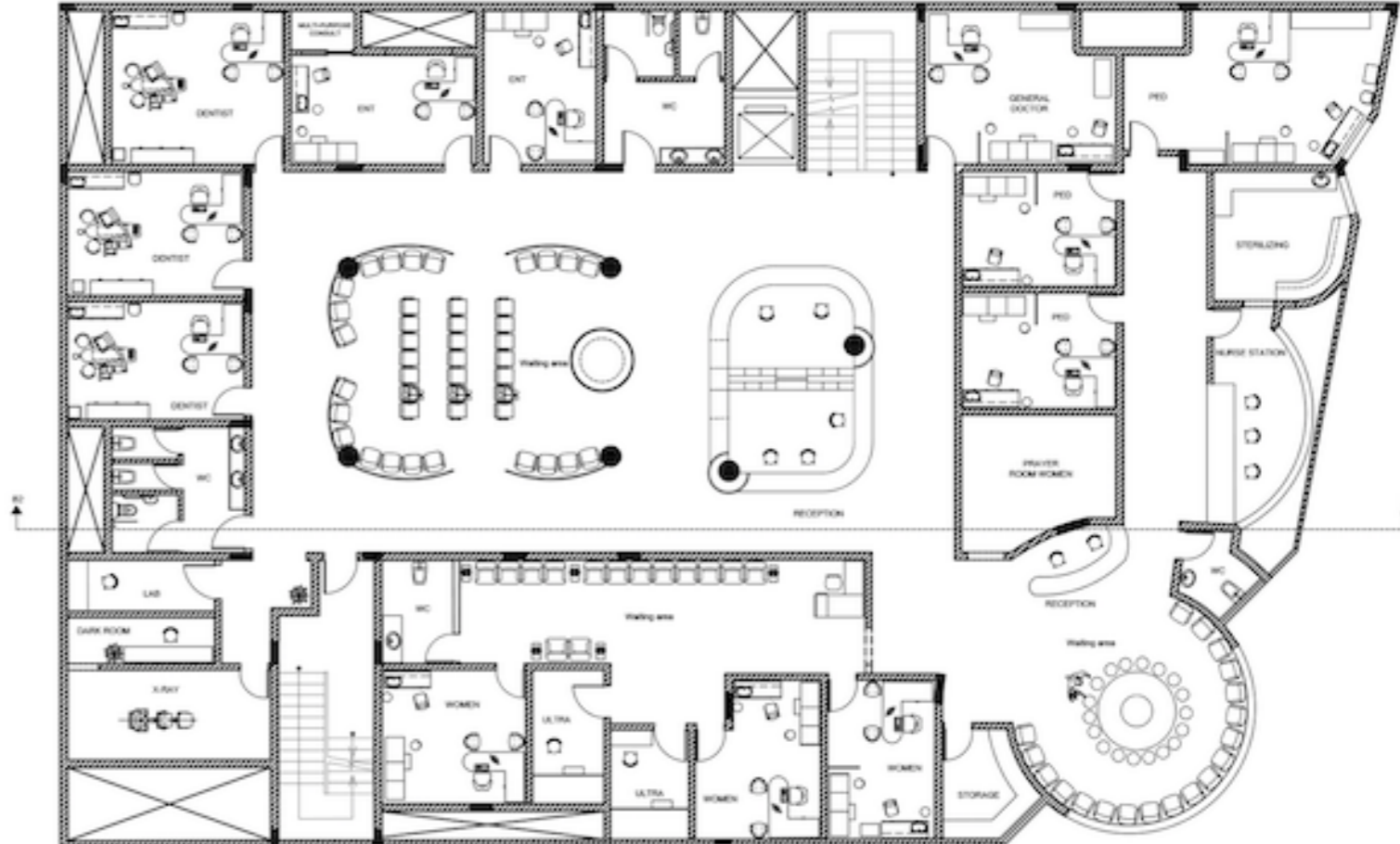
Hospital design



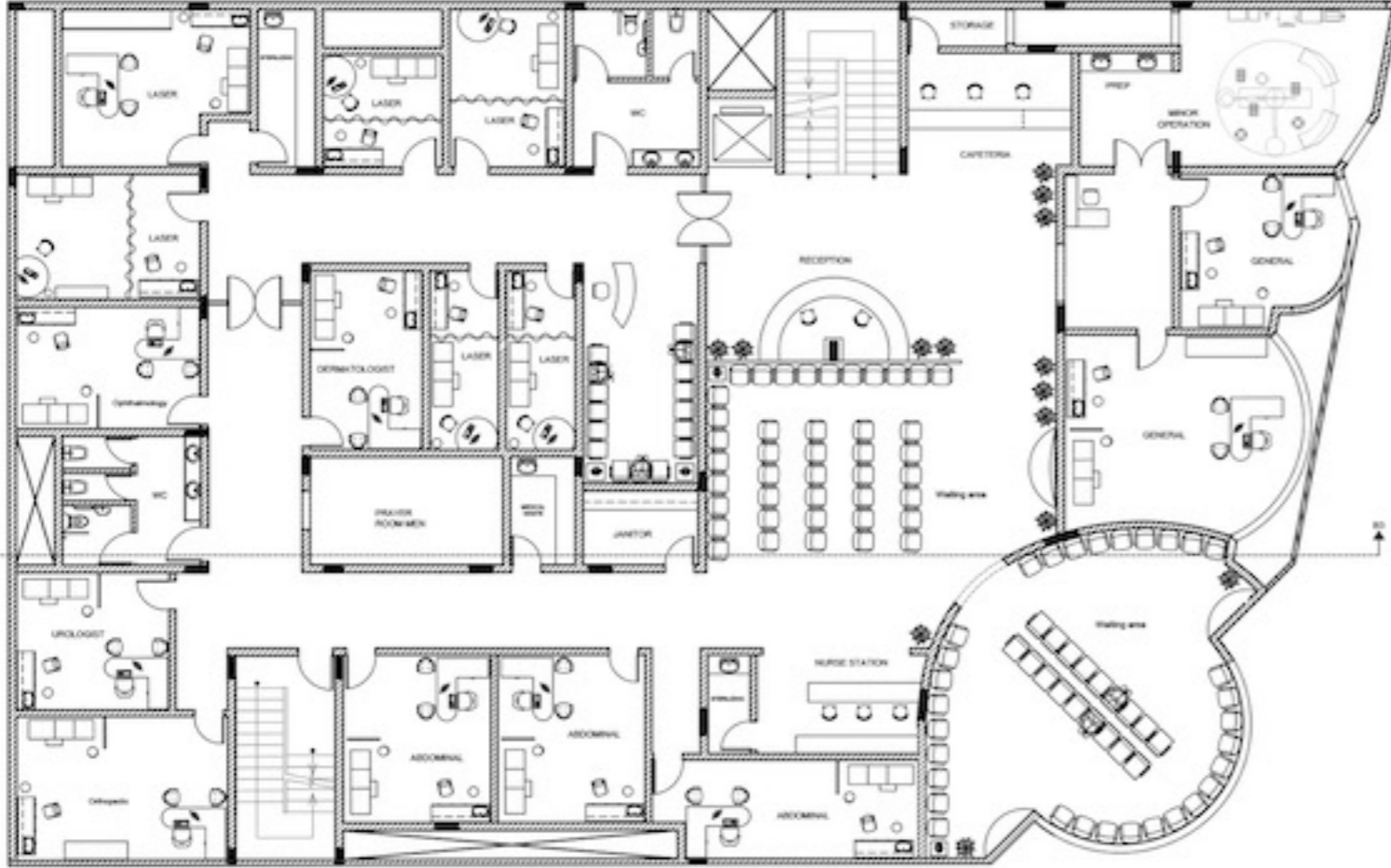
- ### No. Of Users & Clins
- | | |
|-----------------------|--------------------------------------|
| 3 Pediatric | 1000 Patients/Day Approx. |
| 3 General Doctors | 29 Doctors |
| 3 Dentist | 46 Nurse and Technicians |
| 3 Abdominal | 12 Receptionist |
| 1 Urology | 9-12 Insurance Agents/ Employees men |
| 1 Orthopedic | 4 Insurance Agents/ Employees women |
| 1 Ophthalmology | 4 Pharmacists |
| 2 Dermatology | 10 Janitors |
| 3 Laser | 6 Security |
| 1 Mini operation room | 2 Ambulance & Driver |
| 2 ENT | |
| 2 Ultra sound | |



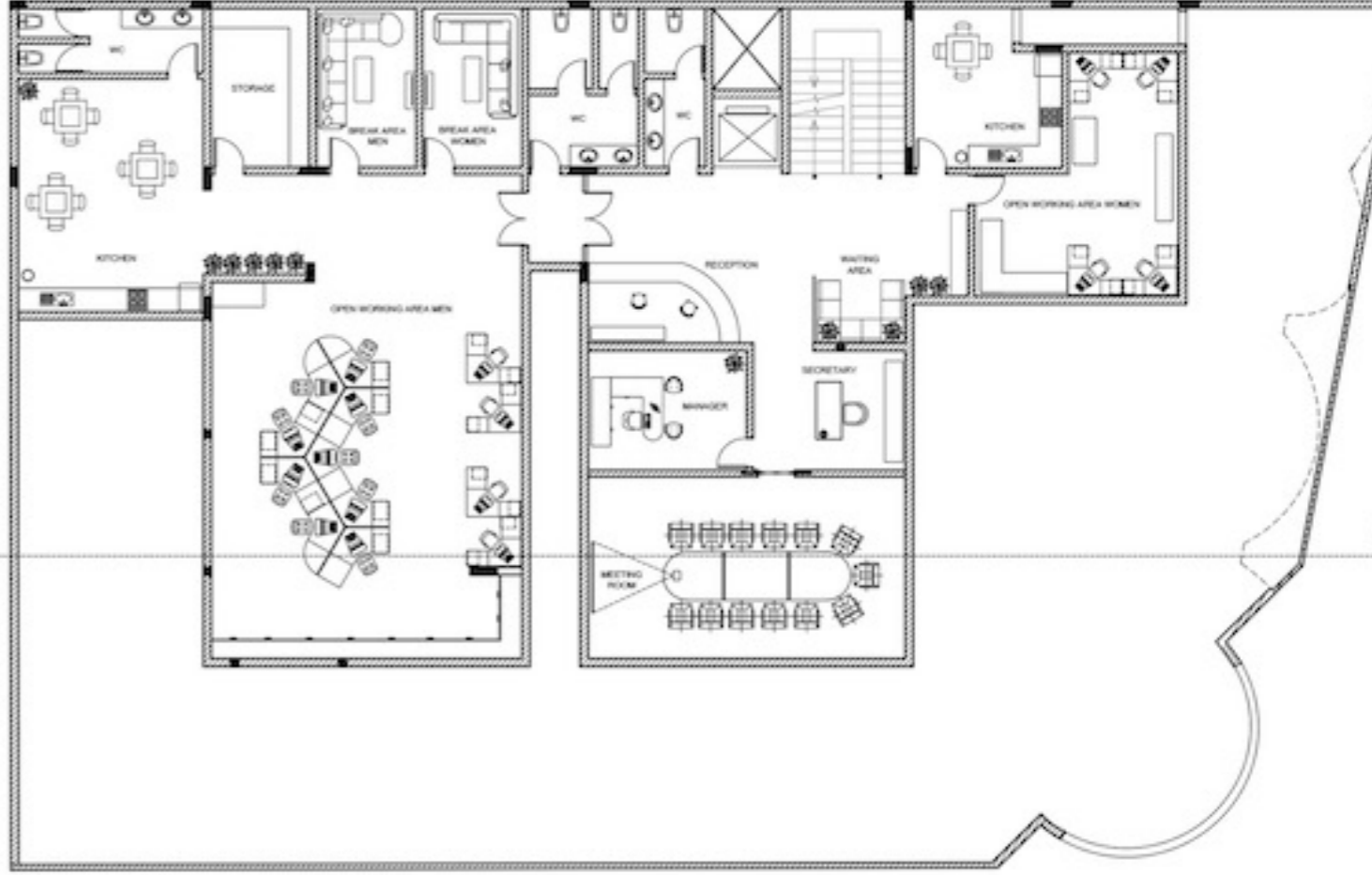
A 1 SCALE **GROUND FLOOR** 1:100



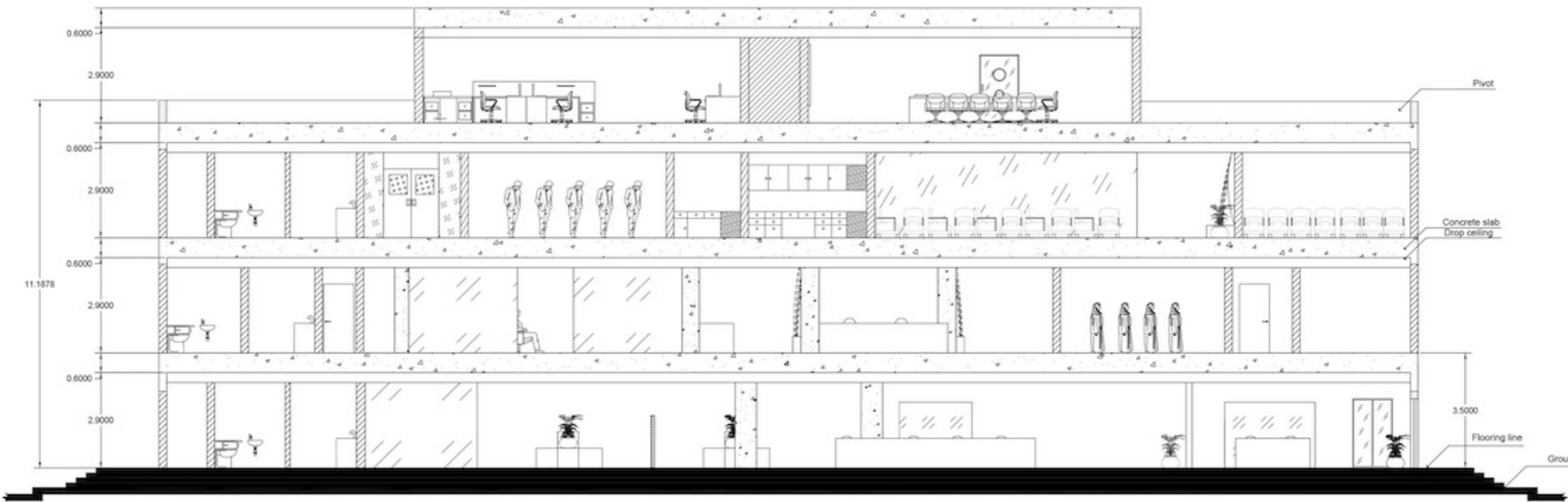
A 2 SCALE **FIRST FLOOR** 1:100



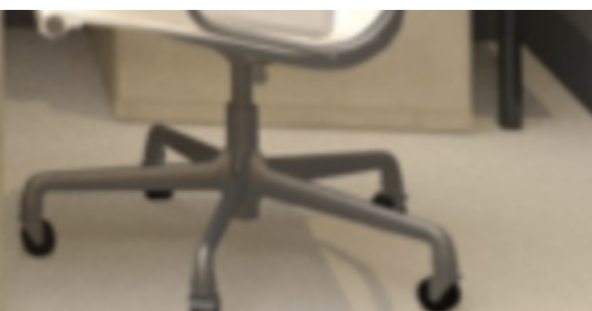
A
3 SCALE SECOND FLOOR 1:100



A
4 SCALE THIRD FLOOR 1:100



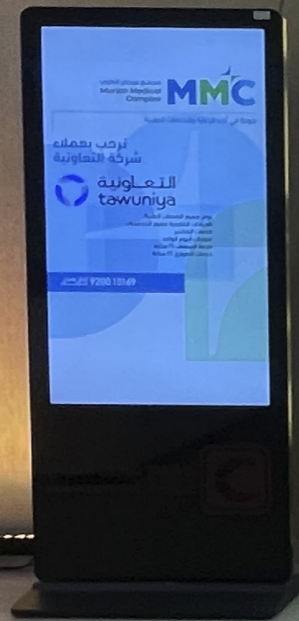
B
1 SCALE FLOORS SECTION 1:50



Hospital II design

Every Song has an end, such
as "The pain before PT".

DENTAL



MMC
شركة التعاونية
التعاونية
tawuniya

DERMA



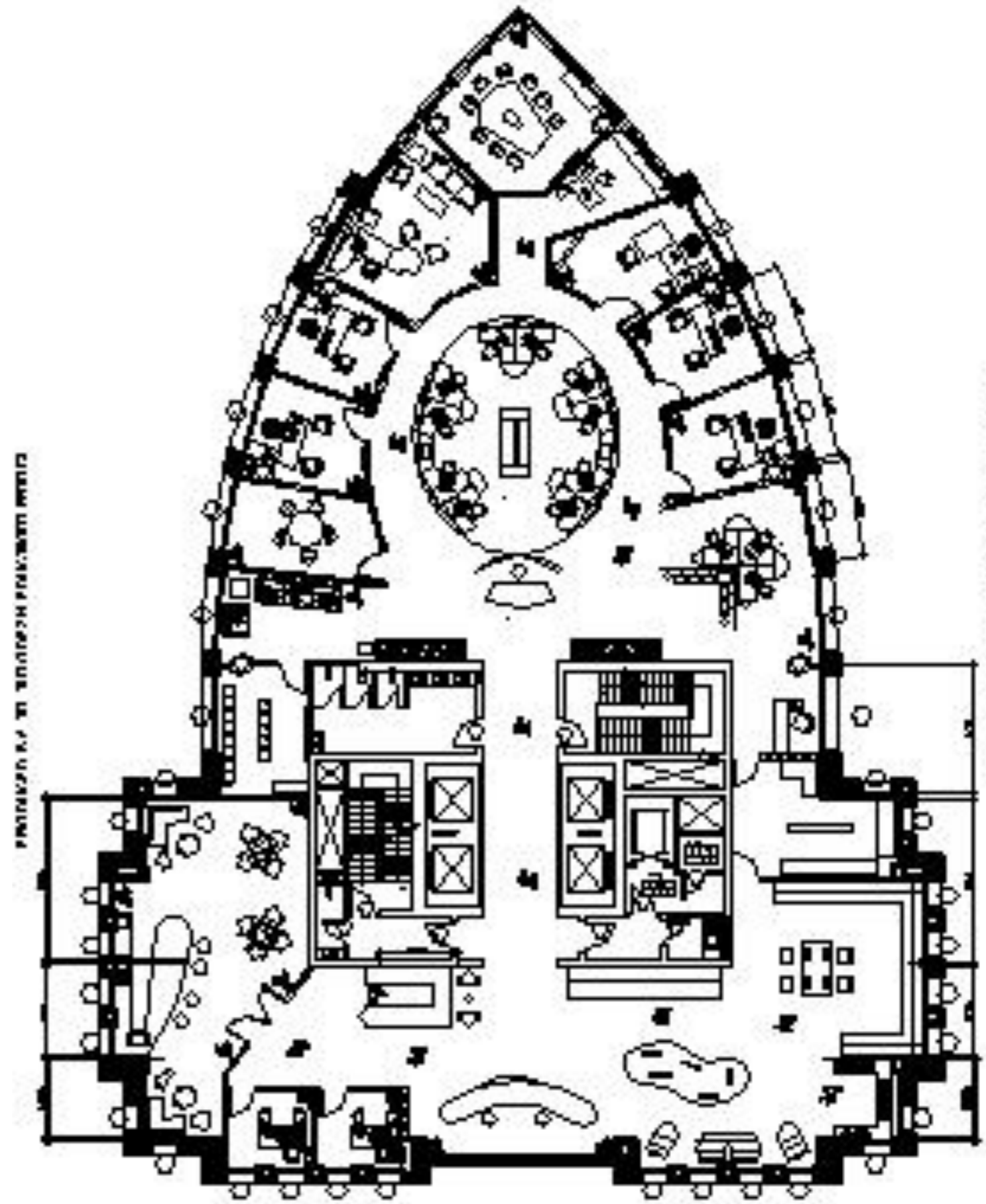
لا تفوت
الفرصة
الصفحات
محدودة





Commercial design

Porsche office design



Recreation design



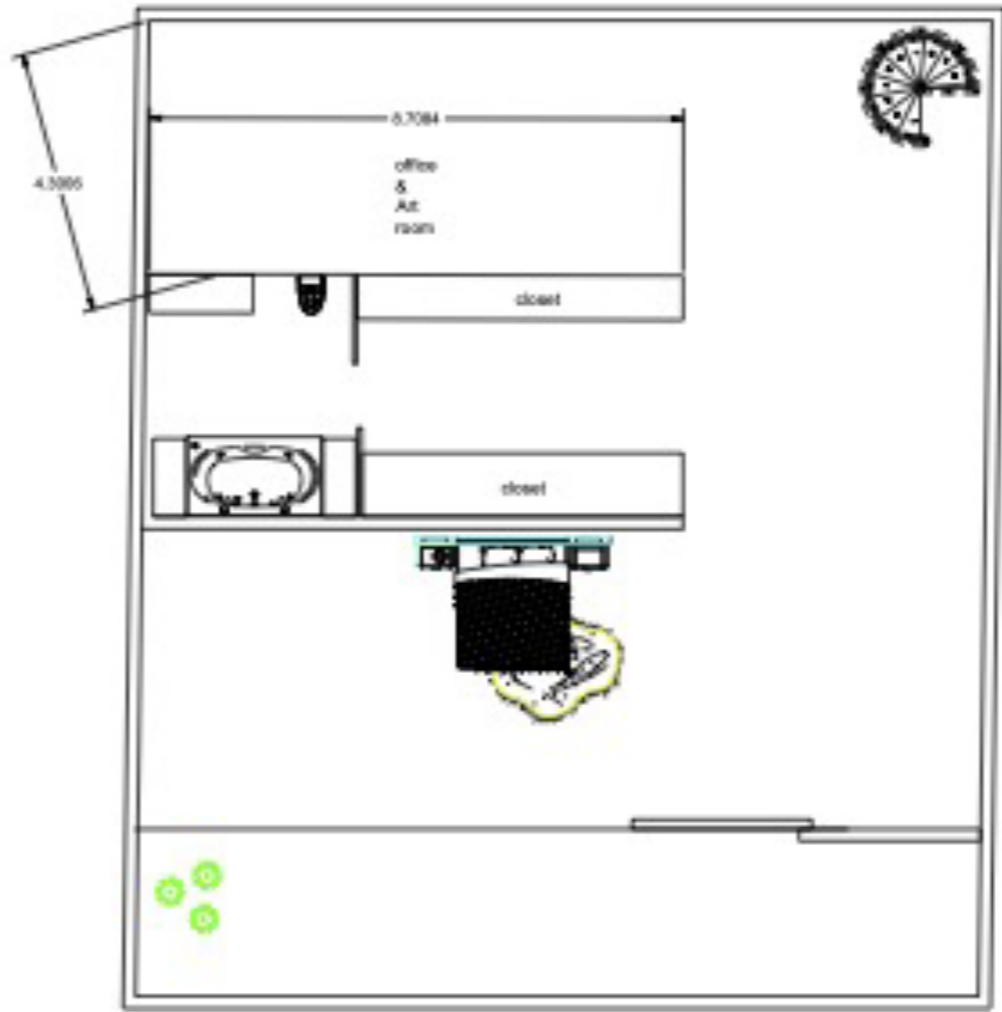
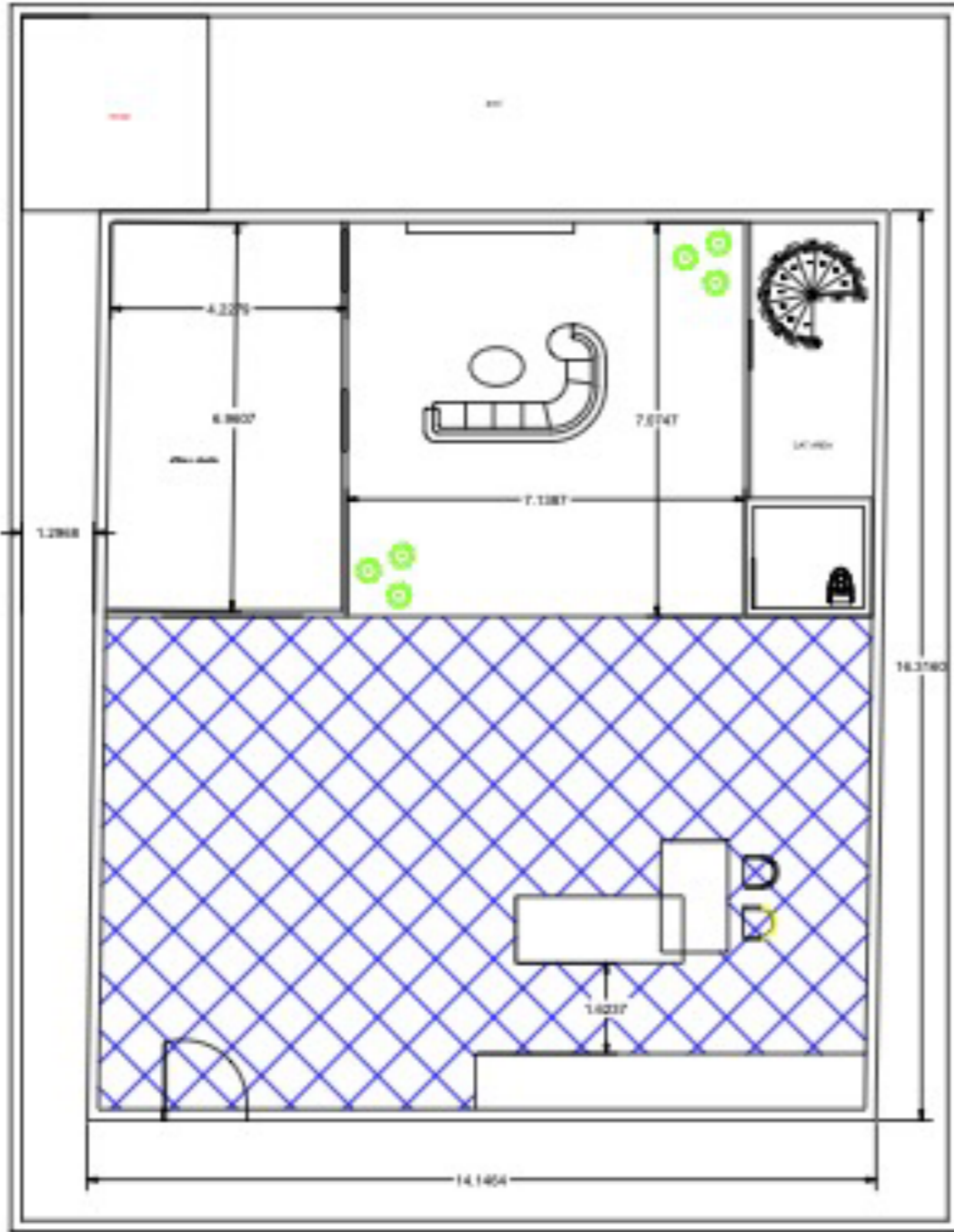


3D design



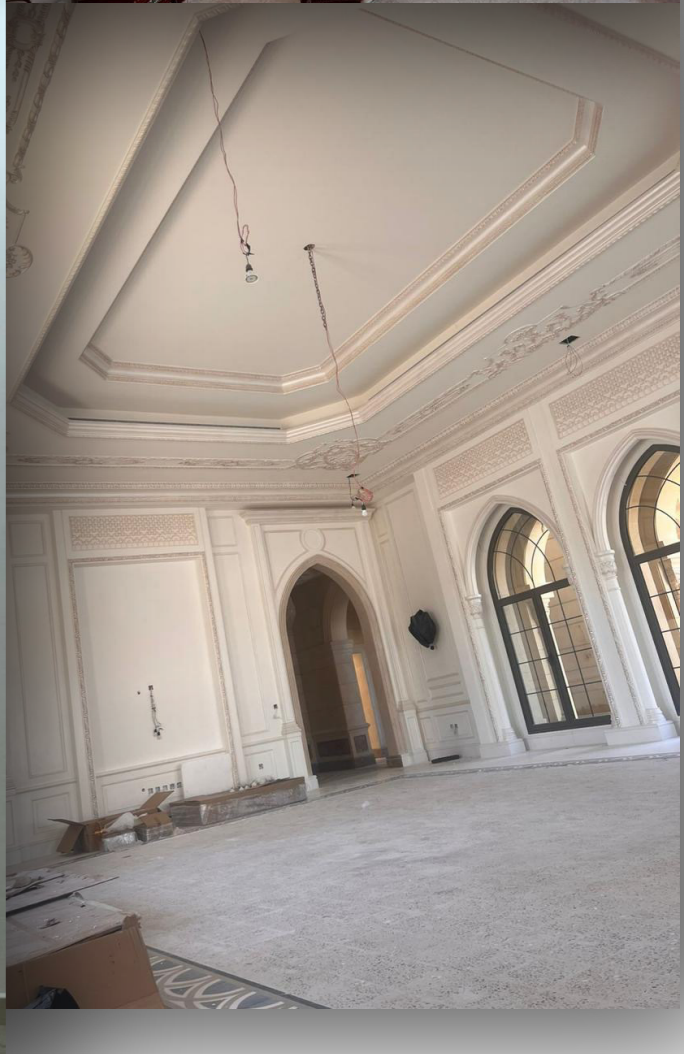
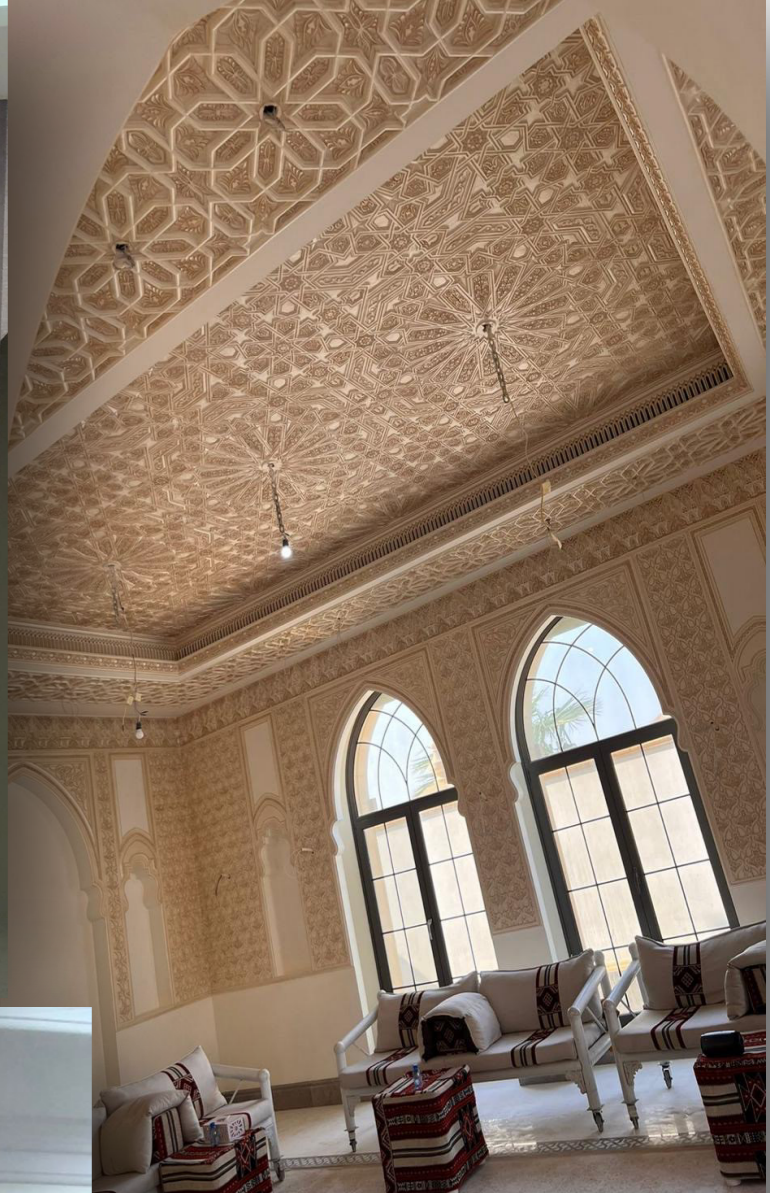
A photograph of a modern villa terrace at dusk. The terrace features a large, dark infinity pool in the foreground. To the left, there is a glass-walled interior space with a dining table and chairs. The background shows a sunset over the ocean with palm trees. The text "Villa design" is overlaid in the center in a white, sans-serif font.

Villa design





Implementation of materials

































THANK YOU